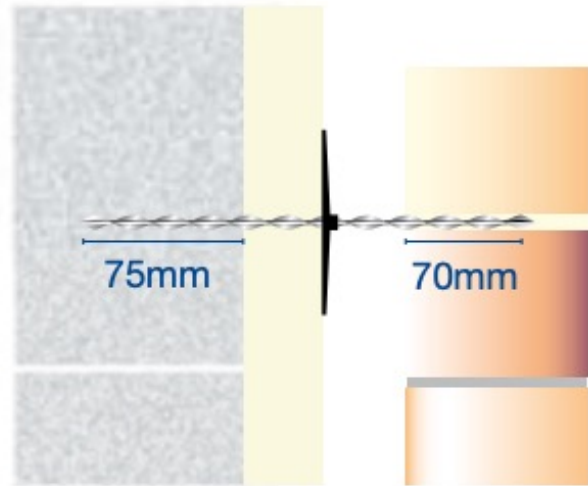


# HELI Thin Joint Wall Tie

**Data sheet**

Issue Date:  
March 2026

Hammer-driven cavity wall tie, ideal for aircrete blockwork and applications where the joints of inner and outer leaves of masonry do not course.



## Product

### HELI Thin Joint Wall Tie

Hammer-driven cavity wall tie, ideal for aircrete blockwork and applications where the joints of inner and outer leaves of masonry do not course.

### Benefits:

- Ideal for aircrete blockwork
- Can be installed through insulation
- Flexibility accommodates structure movement
- Can be used with or without insulation
- A quality stainless steel tie
- Can also be used where conventional bricks, blocks and concrete are used for the inner leaf

### Sizes

6mm x 200mm	8mm x 195mm
6mm x 220mm	8mm x 220mm
6mm x 230mm	8mm x 245mm
6mm x 240mm	8mm x 270mm
6mm x 250mm	8mm x 300mm

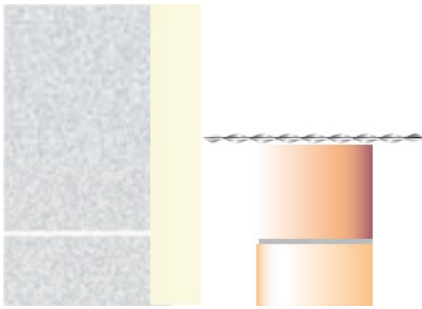
### Embedment:

HELI Thin Joint Wall Ties should have a minimum embedment of 75mm in the inner leaf of blockwork, and 70mm in the outer leaf of brickwork.

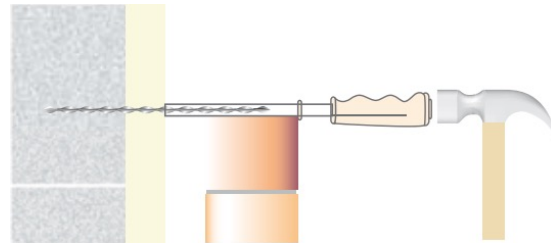
#### Safety Precautions

Helical remedial wall ties may contain sharp ends/edges. Suitable personal protection should always be used when handling/installing these products.

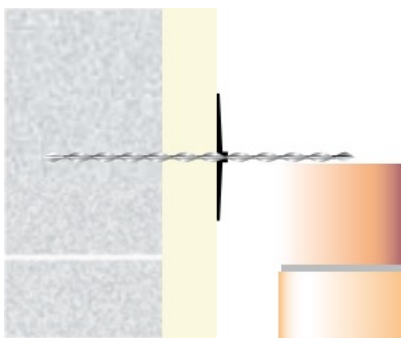
## Installation Guide



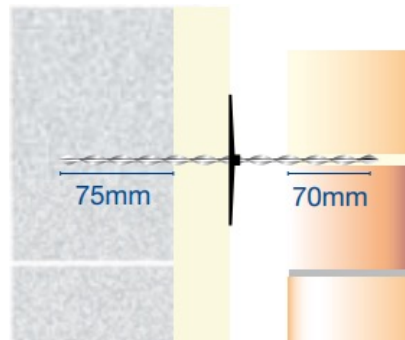
1. Position the tie against the inner leaf so that the outer end will be located in the bed joint of the external leaf



2. Hammer the tie through the insulation, and into the blockwork to the correct embedment depth.



3. Install a ECO Insulation Retaining Clip to restrain the insulation.



4. Build into the bed joint of the outer leaf ensuring the tie is surrounded by mortar.