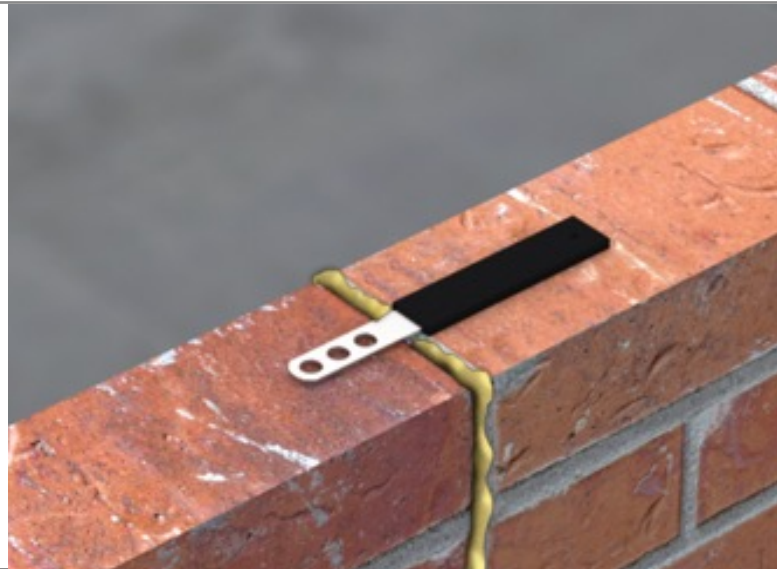
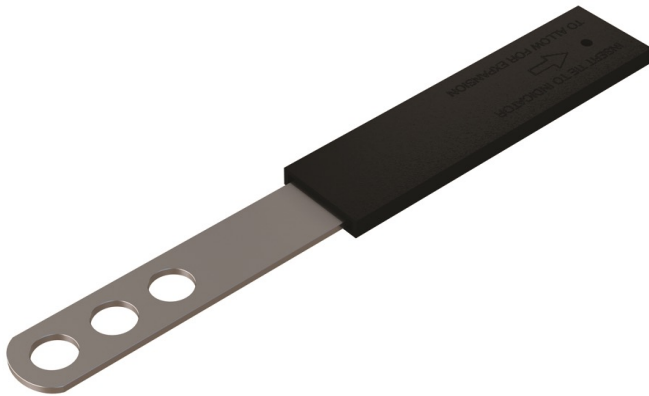


Movement Ties

This range of ties allows masonry walls to be tied back to other structures, (steelwork or masonry) providing restraint in one direction but allowing movement in the other. This is achieved by placing a debonding sleeve over the part of the tie which is to be embedded in the wall, allowing the tie to move within the sleeve. Also used in movement joints where they occur in long runs of brickwork, the ties spanning over a vertical joint preventing vertical movement but allowing horizontal expansion and contraction.



Product

SPE Safety Plain End Tie

Used over a movement joint in a run of brickwork or blockwork with safety embedment detail or plan end (B20). (Sleeve supplied as extra).

Each size is supplied with 250 units per box.

Sizes: 150mm	175mm
200mm	225mm
250mm	275mm
300mm	

Performance

Tests carried out by Lucideon (Notified Body 1289) in accordance with BS EN 846-7:2012: Methods of Test for Ancillary Components for Masonry – Part 7: Determination of shear load capacity and load displacement characteristics of shear ties and slip ties. Vista SPE 200mm long, 19mm wide and 2mm thick, With debonding sleeve (100mm long).

SPE 150-300mm	
Shear Load Capacity	2060N
Mean Displacement at 1/3 mean load capacity	0.66mm
Minimum Embedment	62.5mm
Minimum Mortar Joint	10mm

Safety Precautions

SPE Safety Plain End Ties are manufactured from sheared plate and strip so may contain sharp edges. Suitable personal protection should always be used when handling/installing these products.