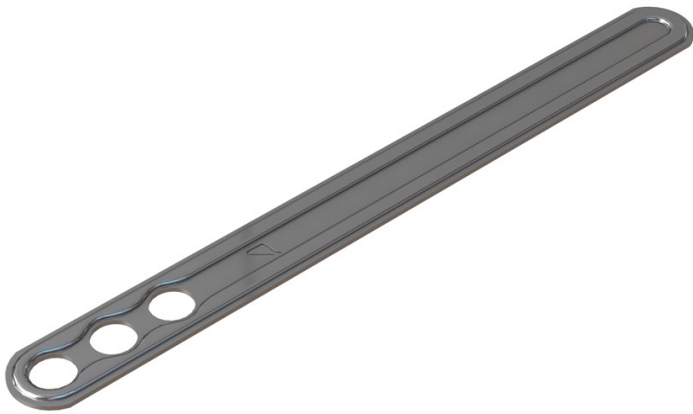


Movement Ties

This range of ties allows masonry walls to be tied back to other structures, (steelwork or masonry) providing restraint in one direction but allowing movement in the other. This is achieved by placing a debonding sleeve over the part of the tie which is to be embedded in the wall, allowing the tie to move within the sleeve. Also used in movement joints where they occur in long runs of brickwork, the ties spanning over a vertical joint preventing vertical movement but allowing horizontal expansion and contraction. Manufactured from grade 304 stainless steel.



Product

SPF Safety Plain End Tie

The SPF is a lighter, stronger evolution of the SPE. Used over a movement joint in a run of brickwork or blockwork with safety embedment detail. (Sleeve supplied as extra).

Supplied with 250 units per box.

Performance

Tests carried out by Lucideon Limited (No. 1289) in accordance with BS EN 846-7:2012: Methods of Test for Ancillary Components for Masonry – Part 7: Determination of Shear Load Capacity and Load Displacement Characteristics of Shear Ties and Slip Ties (couplet test for mortar joint connections). Characteristics of shear ties and slip ties. Vista SPF 200mm long, debonding sleeve not included (100mm long).

SPF-200	
Shear Load Capacity (tie only)	2230N
Shear Load Capacity (in de-bonding sleeve)	1500N
Displacement at 1/3 rd of load capacity (tie only)	2.4mm
Displacement at 1/3 rd load capacity (in de-bonding sleeve)	2.97mm

Safety Precautions

SPE Safety Plain End Ties are manufactured from sheared plate and strip so may contain sharp edges. Suitable personal protection should always be used when handling/installing these products.