

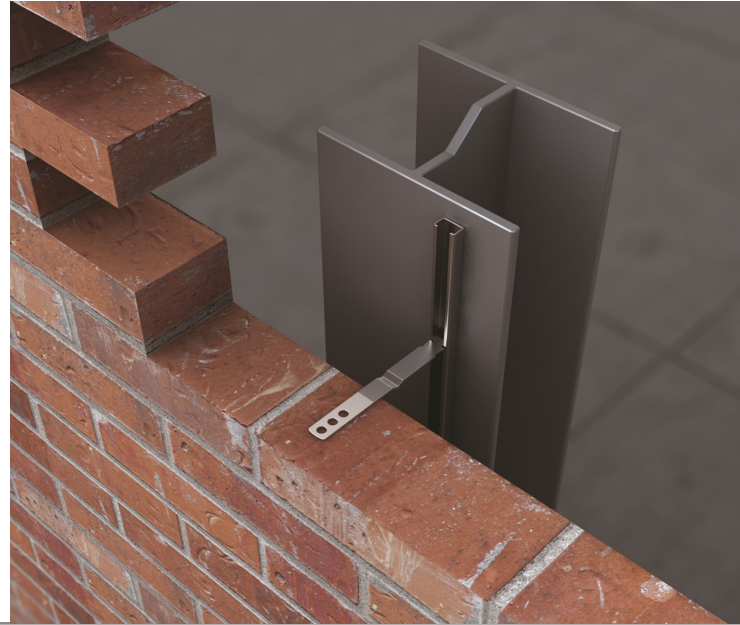
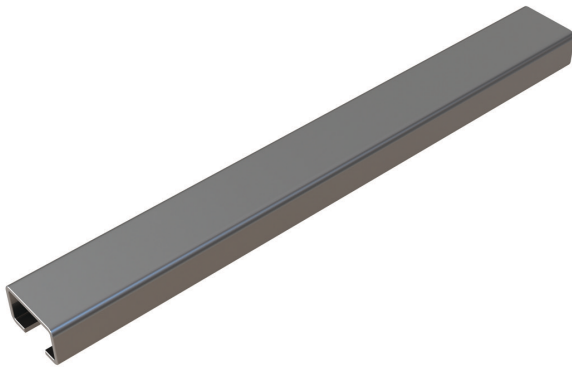
# V60 28/15 Plain Back Channel

Data sheet

Issue Date:  
March 2026

## Channel Systems

These products both allow vertical movement whilst offering horizontal restraint. The channel system tends to be face-fixed while the slot is usually cast into concrete. These systems may be used to overcome differences in coursing between masonry leaves.



## Product

### V60 28/15 Plain Back Channel

28/15 plain back channel for surface fixing (welding). Used in conjunction with ties to restrain brickwork.

Material grade 304 18/8 austenitic stainless steel to and applicable test results BS EN 10088-2.1.4301.

For information on Tie loadings, please refer to individual Data Sheets

Maximum safe working loads of V60 will be subject to suitable fixings/fixing centres and the substrate quality.

Sizes	Units	Per
100mm	100	Box
150mm	100	Box
3000mm	10	Bundle

#### Safety Precautions

V60 28/15 Plain Back Channel is manufactured from sheared plate and strip so may contain sharp edges. Suitable personal protection should always be used when handling/installing these products.

# V60 28/15 Plain Back Channel

Data sheet

Issue Date:  
March 2026

## Technical Specifications

Fixing Centres c/c	Load capacity (P) limiting Stress to 230N/mm <sup>2</sup> & Deflection to span/300 (kN)	Load capacity (P) limiting stress to 230N/mm <sup>2</sup> & Deflection to 1mm (kN)	Displacement at 1/3 load capacity (mm)
150mm	<b>2.1</b>	<b>4.3</b>	<b>(1.43) 0.33</b>
225mm	<b>0.95</b>	<b>1.25</b>	<b>(0.416) 0.32</b>
300mm	<b>0.54</b>	<b>0.54</b>	<b>(0.18) 0.33</b>
375mm	<b>0.34</b>	<b>0.27</b>	<b>(0.113) 0.41</b>
450mm	<b>0.24</b>	<b>0.16</b>	<b>(0.08) 0.5</b>
525mm	<b>0.17</b>	<b>0.1</b>	<b>(0.056) 0.56</b>
600mm	<b>0.13</b>	<b>0.067</b>	<b>(0.043) 0.64</b>