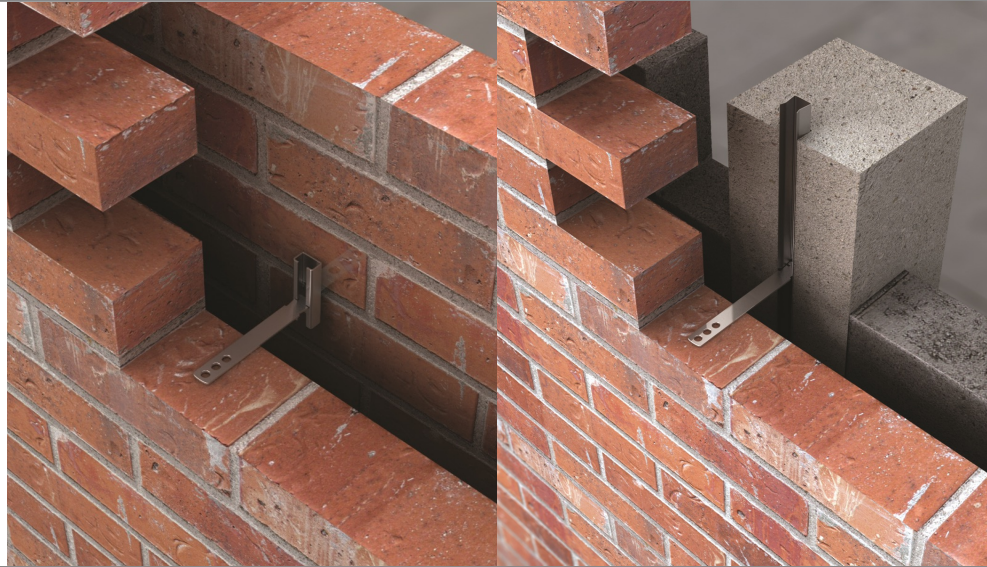
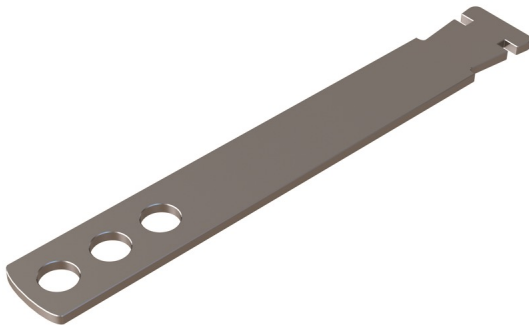


Channel Systems

These products both allow vertical movement whilst offering horizontal restraint. The channel system tends to be face-fixed while the slot is usually cast into concrete. These systems may be used to overcome differences in coursing between masonry leaves.



Product

VS8 Dovetail Safety Tie

A universal head enables this tie to be used with all V60 channel systems and V29 slot to restrain brickwork.

Sizes:

75mm	200mm
100mm	225mm
125mm	250mm
150mm	275mm
175mm	300mm

Performance

VS8 75mm-300mm	
Tensile Load (cast in V29)	2960N
Tensile Load (surface 28/15)	5284N
Tensile Load Mortar End	5636N
VS8 75mm-200mm	
Compressive Load Capacity	4896N
VS8 200mm-300mm	
Compressive Load Capacity	1470N

Safety Precautions

VS8 Dovetail Safety Ties are manufactured from sheared plate and strip so may contain sharp edges. Suitable personal protection should always be used when handling/installing these products.