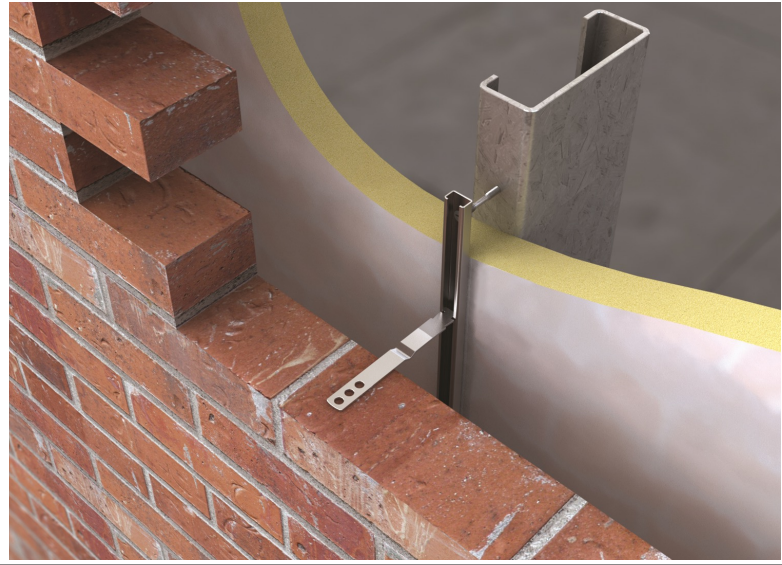
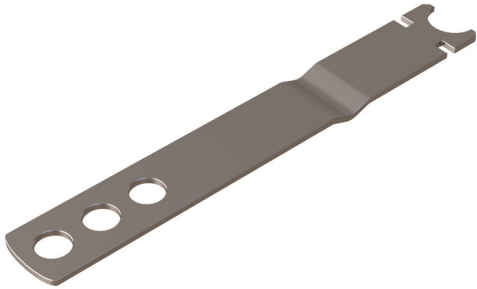


Channel Systems

These products allow vertical movement whilst offering horizontal restraint. The channel system tends to be face-fixed while the slot is usually cast into concrete. These systems may be used to overcome differences in coursing between masonry leaves. Manufactured from grade 304 stainless steel.



Product

VS9 Steel Channel Tie

Head specific for Vista steel frame channel. Tie designed to suit a variety of cavities.

Sizes:

| | |
|----------------|-------|
| 75mm (no drip) | 175mm |
| 100mm | 200mm |
| 125mm | 225mm |
| 150mm | 250mm |

Performance

| VS9 up to 75mm cavity | |
|-------------------------------------|--------------|
| Compressive Load Capacity | 4896N |
| Tensile Load Capacity @ Channel End | 3080N |
| Tensile Load Capacity @ Mortar End | 7760N |

| VS9 up to 165mm cavity | |
|-------------------------------------|--------------|
| Compressive Load Capacity | 1230N |
| Tensile Load Capacity @ Channel End | 3460N |
| Tensile Load Capacity @ Mortar End | 7760N |

Safety Precautions

VS9 Steel Channel Ties are manufactured from sheared plate and strip so may contain sharp edges. Suitable personal protection should always be used when handling/installing these products.